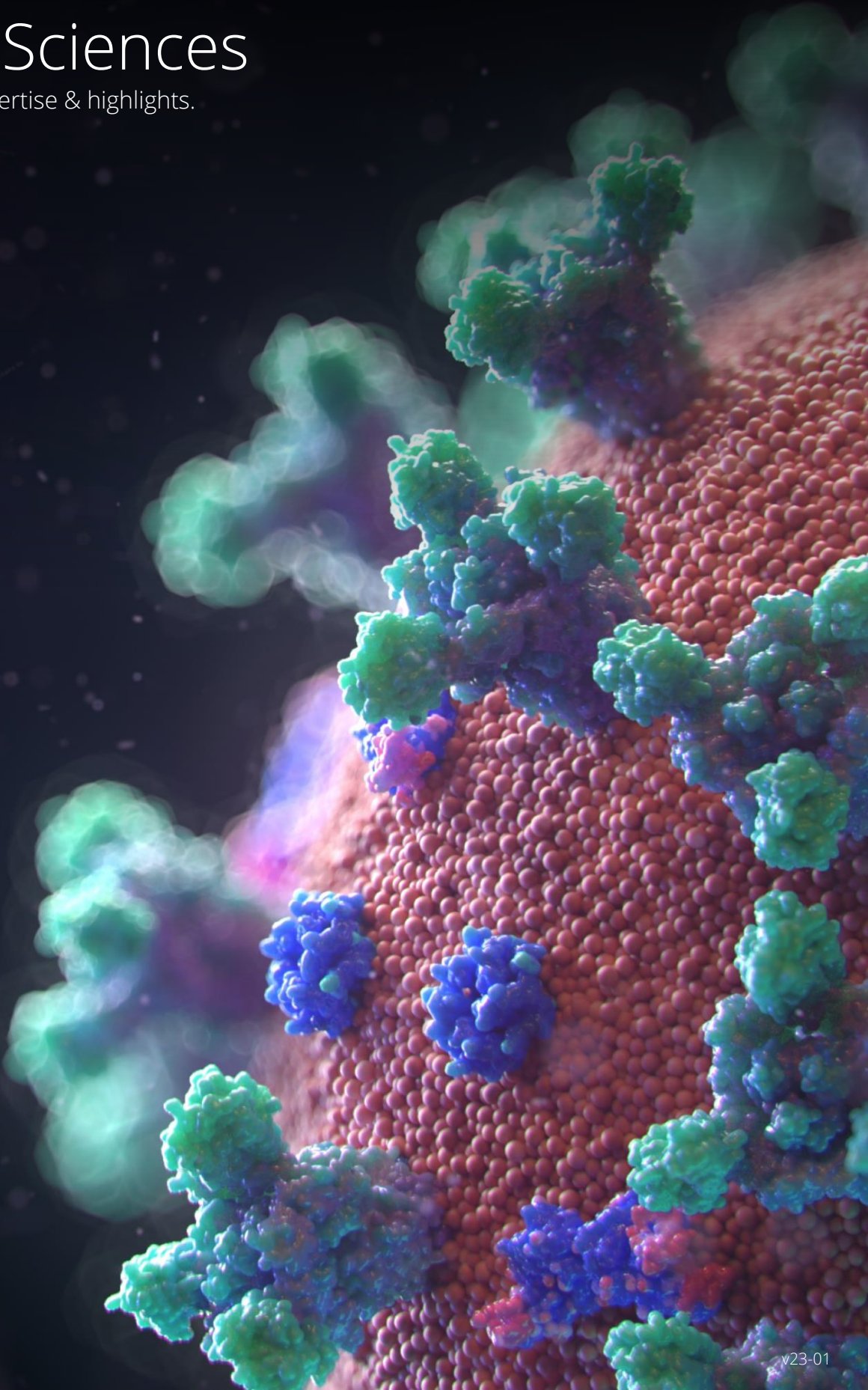




# Life Sciences

Sector expertise & highlights.



# Project Insights

Autolus MediaWorks



**Autolus is a biopharmaceutical company.**

**ESG provided fit-out to 33,000 sq. ft. of office floors and laboratory spaces.**

**Services include VRF Systems, Lighting Control & Chilled Beams.**

## Overview

The MediaWorks development is part of London's Knowledge Quarter transformation and provides space to Autolus, a biopharmaceutical company that develops next-generation programmed T-Cell therapies for the treatment of cancer.

Our electrical and mechanical installation to 33,000 sq. ft. of office floors and laboratory spaces include fan coil systems, chilled beams, VRF system, lighting control and fire alarm.



# Project Insights

One Mabledon Place | The Halo Building



Occupied by the largest independent provider of clinical diagnostic services in the UK.

120,000 sq. ft. office development over 10 storeys.

BIM-driven delivery to integrate with existing building services.

## Overview

Halo Building is the largest and most advanced Pathology Laboratory in Europe located in the heart of central London's Medicity, providing world-class manual and automated sample handling systems.

This complex project was a joint venture between The Doctors Laboratory (TDL), University College London Hospitals NHS Foundation Trust (UCLH), and the Royal Free London NHS Foundation Trust (RFL) forming Health Services Laboratories (HSL),

Receiving an extensive redesign and green refurbishment by our ESG Prime team. The completed building achieved BREEAM excellent and increased the energy efficiency by more than 60%.

Carried out in close collaboration with the main contractor to achieve its high quality and BIM-compliant delivery, it was both challenging and complex. The systems needed to coordinate with a vast number of existing services, requiring careful planning, coordination and a team used to an evolving delivery programme.

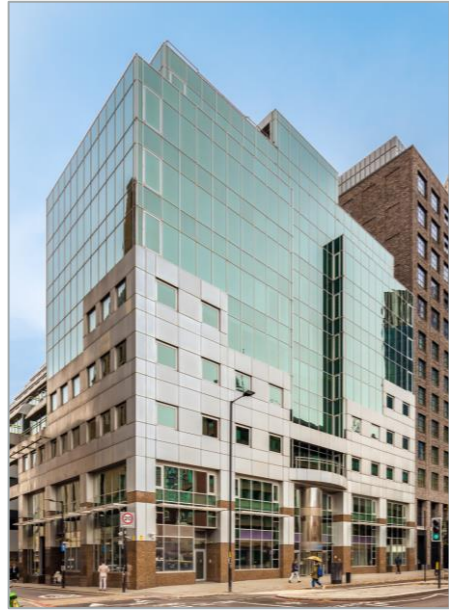


Images courtesy of KB Architects



# Project Insights

Various



## 41 Blackfriars

A fast-track refurbishment project that will provide laboratory space for local healthcare providers, including Guy's and St Thomas' Hospitals.

Delivered by our expert ESG Prime team, the project includes a comprehensive electrical services fit-out with HV upgrades, new lighting and power, fire alarm and security systems, and generators.



## Whitfield Street

Clinical Biochemistry HSL at 60 Whitfield Street has a fully automated laboratory offering a range of routine biochemical tests to UCLH and local GPs.

In addition, Special Biochemistry offers a range of laboratory services for the specialist investigation of endocrine, protein and urological disorders to UCLH and many other hospitals throughout the UK.

ESG were engaged to complete the MEP services installation of offices and laboratory facility, phased to accommodate existing building occupation. This included work within live environments and maintaining existing services during the project delivery.



## Heart & Lung Institute

Refurbishment for The Faculty of Medicine at Imperial College London.

The project includes 3,000 sq. m of space within the Clinical Research Building to accommodate research laboratories and teams from the National Heart and Lung Institute.

This project is a live environment delivery, requiring major validation of the current systems to ensure Imperial College runs at its full uninterrupted capacity.



## One Welbeck

In an area historically associated with the medical profession, this seven-storey redevelopment of an existing 1960's office building repurposed it as a specialist facility for minimally invasive day surgery and out-patient diagnostics.

One Welbeck was delivered through a complete MEP design and services install including medical gas supplies, nurse-call communication systems and theatre alarm packages. Remaining partially occupied during its redevelopment, the need to coordinate with the buildings existing services was supported with the use of Point Cloud surveys. This information, integrated directly with the project model, allowing for greater accuracy, a safer installation and improved understanding.