



Offsite Assembly

Sector expertise & highlights.



Project Insights

280 Bishopsgate | London



Refurbishment of 264,500 sq. ft. of commercial office space.

Sustainable project scheme with all-electric design.

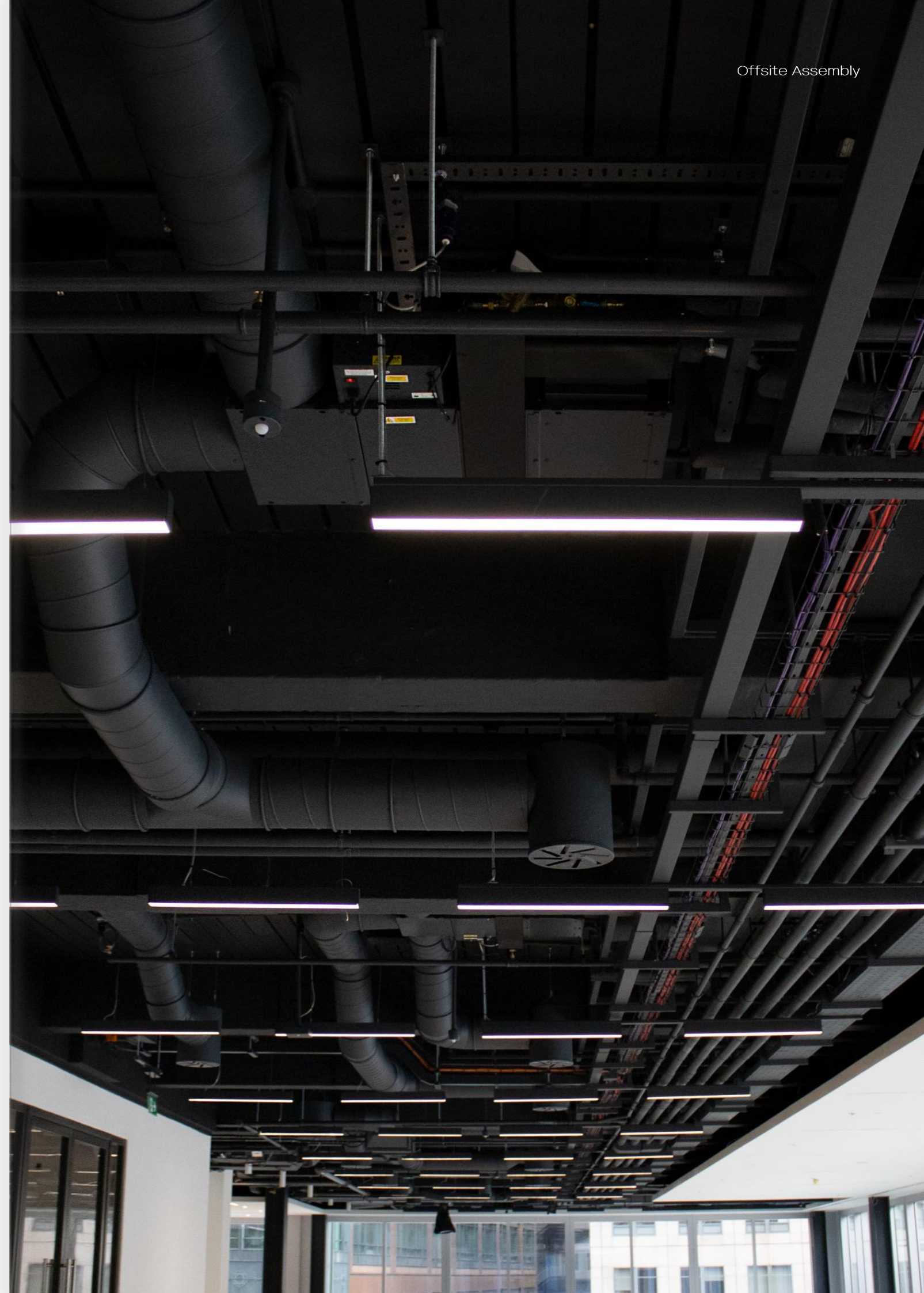
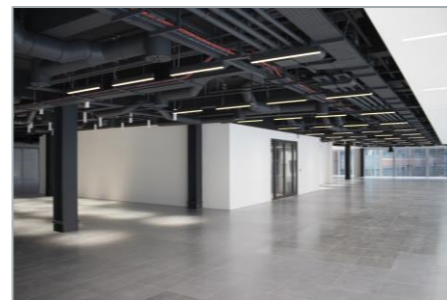
Extensive use of our offsite assembly solutions for pre-painted services distribution.

Overview

The Galliford Try project in Bishops Square, Spitalfields was delivered for Arax Properties. It included the internal refurbishment of 264,500 sq. ft. of prime office space to Category A level, as well as full fit-out of core and reception areas, new basement and roof plant areas.

Private terraces on every floor and communal roof gardens were included in the new scheme, with energy saving, extensive environmental and sustainability improvements targeting energy consumption, waste management and air quality.

ESG are very proud of the sustainability achievements made on this project, reaching a BREEAM rating of 'Outstanding' and WELL Platinum certification.



Project Insights

Various



Greenwich Peninsula

Our projects across the Greenwich Peninsula have employed extensive fabrication techniques with thousands of utility cupboard modules delivered across multiple sites. This is in addition to sectional risers, corridor distribution modules and plant skids.

The Upper Riverside development made extensive use of our skeleton design utility cupboard, a lightweight welded steel frame that is coordinated with cupboard services, providing equipment support points and integrated cable trunking. This design has proved a huge success, resulting in further project involvement across the £8.4 billion transformation.

Vauxhall Sky Gardens

A completely offsite approach was delivered to Vauxhall Sky Gardens, a central riverside location between London Vauxhall and Battersea.

Part of the largest regeneration project seen in Europe, the 130m tower relied heavily on a prefabrication approach. Services provided include sectional skids to the extensive basement plant rooms, sectional risers, horizontal services distribution and over 250 prefabricated utility cupboards.

Burlington Gate

As part of our project delivery, ESG provided utility cupboards, sectional risers and horizontal distribution modules to this exceptional development.

A high end, luxury residential project. Burlington Gate is a redeveloped 83,000 sq. ft. space in London's Bond Street and is centered around the first new arcade in Mayfair since 1930.



145 City Road

Located nearby to London's Old Street and Moorefield's Eye Hospital, 145 City Road consists of 302 apartments and 10 floors of office space.

ESG provided a full MEP delivery consisting of connections to district heating system, chillers, fan coils, air handling units, HIU's, LTHW, CHW, boosted cold water, soil and vent, rainwater, mains distribution, small power, BMS, lighting and external lighting, lighting control.

Extensive use of offsite solutions was also incorporated into the scheme with the inclusion of preassembled utility cupboards and services distribution.

302 Apartments and 10 floors of commercial office space.

Full MEP scope delivered including Heating Systems, Lighting, Power and Controls.

Extensive use of our offsite assembly solutions.



Project Insights

Various



Extensive use of our offsite assembly solutions including 975 utility cupboard units.

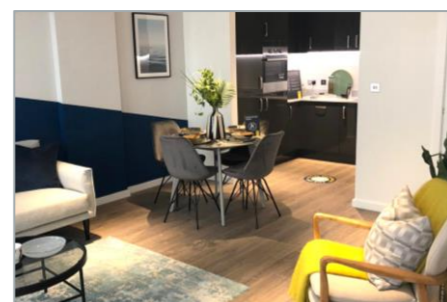
Full use of digital coordination to achieve perfect fabrication details.

Plug & play connectivity allowing for minimal site installation.

Brunel Street Works

Surrounded by the DLR, Jubilee Line and Silvertown, this new development is part of the Silvertown Way Regeneration Masterplan, designed to redevelop and expand the town centre as well as increase local housing.

Brunel Street Works offers a mix of tenures, community spaces and various commercial elements. The 975 apartments that make up the residential element have benefitted from the inclusion of preassembled M&E utility cupboards. Each utility cupboard was designed with a modular wiring 'plug & play' connection system to keep the need for electrical final fix activities at a minimum once they were safely delivered to site.



Emergency mobilisation in response to the Covid Pandemic.

24-hour rolling operation that followed strict safety guidelines.

Environmental project delivery with seamless integration between offsite and onsite teams.

Nightingale Hospital

In response to the Covid-19 Pandemic, Excel Centre London was selected as an emergency ICU location and was running within just a few weeks.

Supporting our NHS at a time of crisis, the need to reduce site-based operatives, deliver a fast-track programme and abide by social distancing guidelines was paramount. ESG operated a 24-hour operation making full use of our offsite capabilities. Materials arriving early morning were assembled into fully wired 'plug & play' bedhead units before being delivered by the same transport and installed overnight.

The professionalism of everyone involved with this unprecedented project is something we remain very proud of.

