



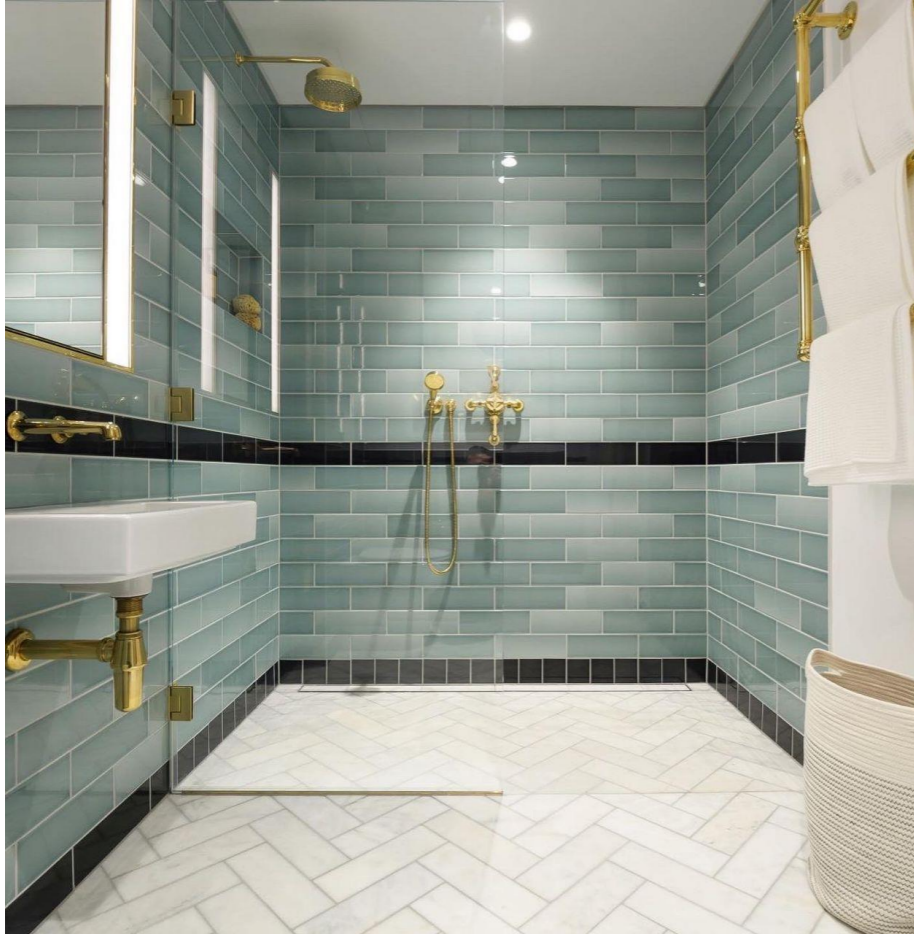
# Residential

Sector expertise & highlights.



# Project Insights

Battersea Power Station | Switch House West



98 high-end apartments delivered within Switch House West.

Offsite assembly incorporated for services distribution.

Seamless integration with exposed surfaces and materials.



## Overview

Switch House West was the first section of the Grade 2 listed building to reach completion, respectfully restored by architect WilkinsonEyre.

First home to the power stations main switch gear, laboratory and battery rooms, the development now has 98 new apartments that retain much of the original features and character. MEP delivery needed to work seamlessly with exposed surfaces and the outstanding results are testament to the skills, commitment and dedication of the ESG project delivery teams involved.



# Project Insights

5 Marble Arch | London



54 high-end apartments and 95,000 sq. ft. of commercial office space.

Penthouse apartments worth over £130 million.

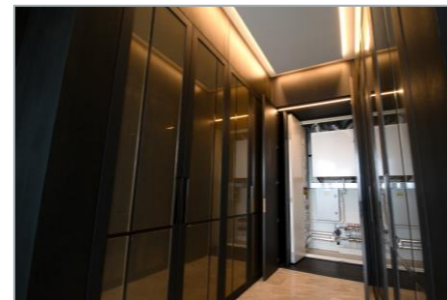
Eight separate MVHR systems per apartment.

Extensive use of our offsite assembly solutions.

## Overview

The development consists of an 18-storey residential tower, with 54 apartments and a 7-storey commercial building providing over 95,000 sq. ft. of office space. ESG were proud to be part of this enviable residential and commercial address where the sophistication of Mayfair meets the calmness of Hyde Park.

The apartment fit-out including 2 penthouses, benefit from our commitment to using offsite assembly wherever possible. A total of 228 preassembled Utility Cupboards were incorporated into the scheme which included The BTI Penthouse, worth a staggering £130m alone, having 8 bedrooms fitted out with the latest MEP systems including 8 separate MVHR systems.



# Project insights

Dovehouse Street



Luxury later living development in London's Kings Road.

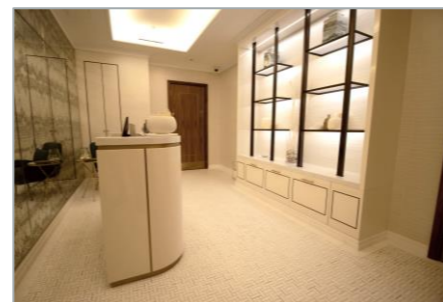
Apartment and leisure facilities including gym, pool and healthcare facility.

Full MEP scheme delivered, including audio and visual systems, BMS, lighting and controls.

## Overview

A luxury later living development of 56 apartments and amenity areas including gym, swimming pool and a healthcare facility, located in the Kings Road, Chelsea.

ESG delivered a full MEP scheme to the high-end apartments and its premium leisure area consisting of: HIU's, LTHW, FCU's, boosted cold water, soil & vent, small power, audio visual, BMS, lighting and external lighting, lighting control.



# Project Insights

Greenwich Peninsula | Upper Riverside



London's largest single regeneration project.

Multiple developments delivered across the peninsula.

Electrical installation to a 5km elevated runway that weaves through development.

## Overview

London's largest single regeneration project. Overlooking the River Thames and Emirates Air Line this development provides new homes and public spaces over seven separate communities.

The £8.4 billion transformation of the Peninsula provides almost 16,000 new homes and is home to Central London's first major film studio, a new design district, schools, offices, health services, and public spaces. This included an elevated five kilometer running track that weaves through the different features of the development and is set off by the custom-made lighting scheme installed by our expert team.



# Project Insights

The Atlas Building | 145 City Road



**302 apartments and 10 floors of commercial office space.**

**Full MEP scope delivered including heating systems, lighting, power and controls.**

**Extensive use of our offsite assembly solutions.**

## Overview

Located nearby to London's Old Street and Moorefield's Eye Hospital, 145 City Road consists of 302 apartments and 10 floors of office space.

ESG provided a full MEP delivery consisting of connections to district heating system, chillers, fan coils, air handling units, HIU's, LTHW, CHW, boosted cold water, soil and vent, rainwater, mains distribution, small power, BMS, lighting and external lighting, lighting control.

Extensive use of offsite solutions was also incorporated into the scheme with the inclusion of preassembled utility cupboards and services distribution.

