



# Specialist Projects

Sector expertise & highlights.



# Project Insights

One Mabledon Place – The Halo Building



Occupied by the largest independent provider of clinical diagnostic services in the UK.

120,000 sq. ft. office development over 10 storeys.

BIM driven delivery to integrate with existing building services.

## Overview

Halo Building is the largest and most advanced Pathology Laboratory in Europe located in the heart of central London's Medicity, providing world-class manual and automated sample handling systems.

This complex project was a joint venture between The Doctors Laboratory (TDL), University College London Hospitals NHS Foundation Trust (UCLH), and the Royal Free London NHS Foundation Trust (RFL) forming Health Services Laboratories (HSL),

Receiving an extensive redesign and green refurbishment by our ESG Prime team. The completed building achieved BREEAM excellent and increased the energy efficiency by more than 60%.

Carried out in close collaboration with the main contractor to achieve its high quality and BIM-compliant delivery, it was both challenging and complex. The systems needed to coordinate with a vast number of existing services, requiring careful planning, coordination and a team used to an evolving delivery programme.

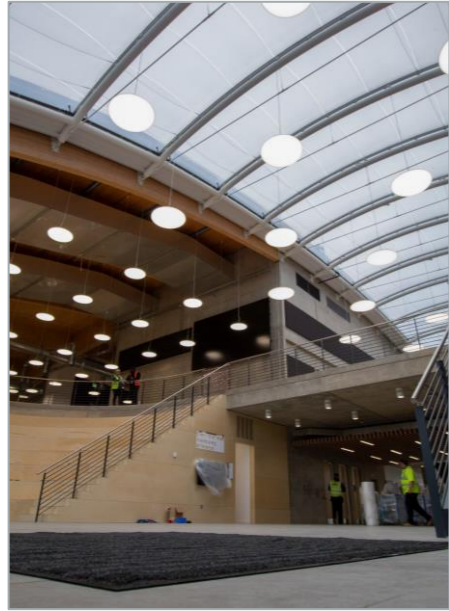


Images courtesy of KB Architects



# Project Insights

Various



## The Heart Building

A new multi-purpose development offering event spaces, kitchens, gym, outdoor activity facilities, offices, and a customer experience zone for retailer Tesco.

The development was aimed at providing colleagues with new areas to work and socialise – a central hub for their business. ESG were appointed to undertake the full MEP design, coordination, and delivery of exposed services throughout this modern building while not compromising the overall internal look and feel of the contemporary space. Overcoming key design and coordination challenges, particularly with most MEP services on show were assisted with high levels of 3D visualisation and a BIM-led process.



## One Welbeck

In an area historically associated with the medical profession, this seven-storey redevelopment of an existing 1960's office building repurposed it as a specialist facility for minimally invasive day surgery and out-patient diagnostics.

One Welbeck was delivered through a complete MEP design and services install including medical gas supplies, nurse-call communication systems and theatre alarm packages. Remaining partially occupied during its redevelopment, the need to coordinate with the buildings existing services was supported with the use of Point Cloud surveys. This information, integrated directly with the project model, allowing for greater accuracy, a safer installation and improved understanding.



## Norwich Street

Located in the heart of London and running parallel to High Holborn, Norwich Street's refurbishment comprised MEP building services installation and Cat-A extension to an existing six storey commercial office space.

Redesigned upper floors and two completely new storeys, all within a busy Central London location made this a logistically challenging project and its successful delivery is testament to the commitment and experience of our ESG Prime team



# Project Insights

The Pavilion | IQL Stratford



10,000 sq. ft. mixed-use events facility with exposed services.

Bespoke built, timber and glulam beam

## Overview

The Pavilion is a two-storey building plus an active roof terrace and separate basement plant room of c.10,000 sq. ft, located in the heart of the International Quarter London development, Stratford.

The Pavilion forms part of the overall IQL placemaking strategy and is a key feature within the IQL's public realm, Endeavour Square. ESG carried out the supply, coordination and install of all services.

The project achieved a BREEAM rating of 'Outstanding'.

